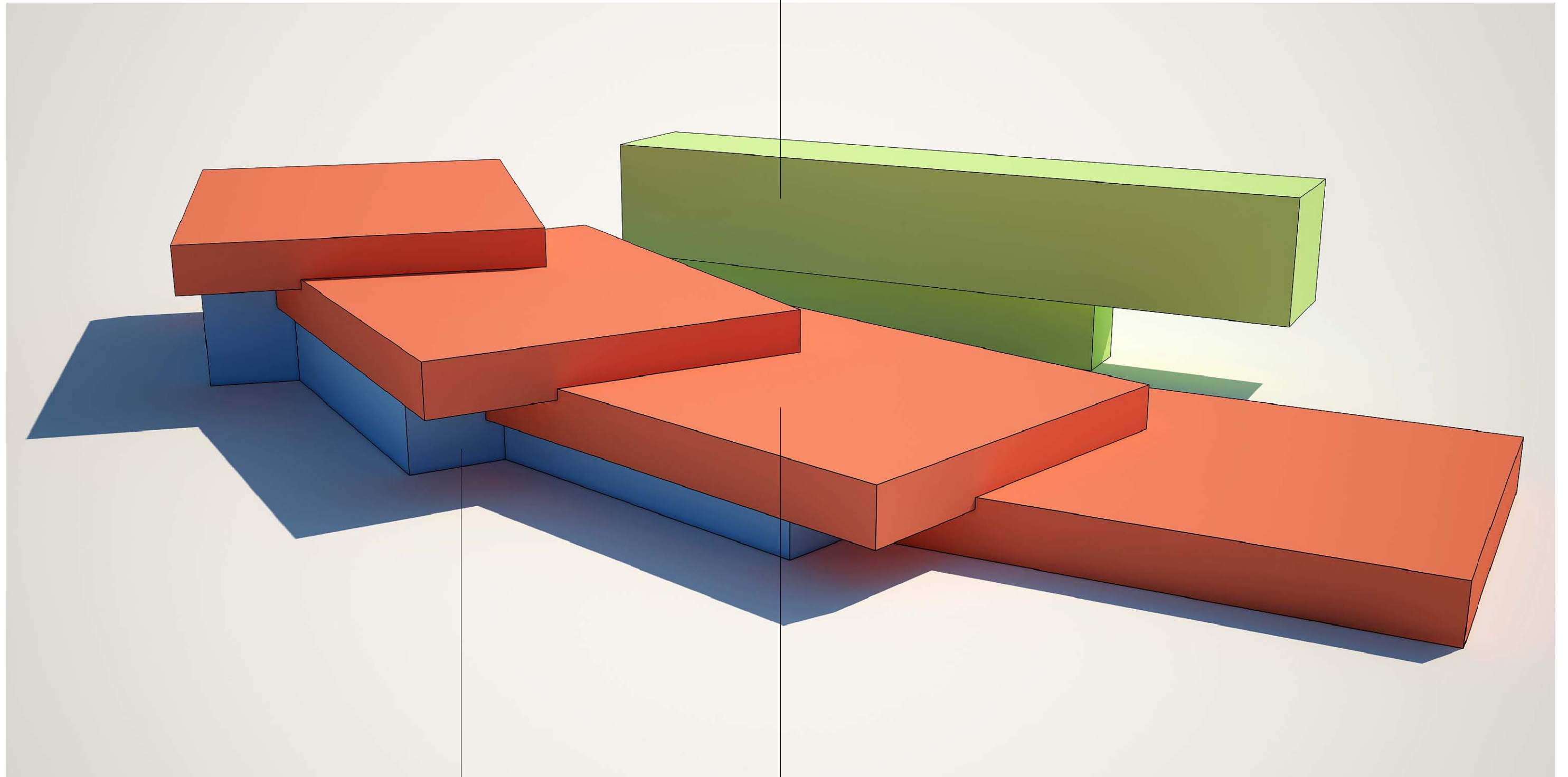






Location

Accommodation space



Multifunctional space

Study space

Volume-spatial functional design

Optimal figures

Land area:	1,3709 ha
Built-up area:	6 000 m ²
Aboveground total building area:	12 500 m ²
Residence hall area:	3 500 m ²
Academic building area:	9 500 m ²
Basement area:	6 000 m ²

Максимально возможные показатели:

Land area:	1,3709 ha
Built-up area:	6 000 m ²
Aboveground total building area:	20 000 m ²
Residence hall area:	5 000 m ²
Academic building area:	15 000 m ²
Basement area:	10 000 m ²

IEM Campus of TSU

1 GENIUS LOCI

Special features of the land area:

It is located at the intersection of two platforms and the difference in elevation is 14-15 m. This area in the North and the East lies at a tangent to the meridian public spaces, which is located on the brow of the upper platform bordering with the territory of the TSU Botanical Garden and the University Lake. The TSU Botanical Garden has unique plant species and an expressive landscape.

Characteristic features of the land area according to the conceptual landscape design:

The area of the study complex includes shifted square platforms, gradually moving from the top down.

The ladder is a leitmotif which reflects a connection of square platforms.

The main interior space is a variable-height atrium which opens to the Botanical Garden by a glass wall.

2. NEW TECHNOLOGIES IN TOMSK

The green roof allows for decorating differences in elevations and fitting them into the landscape.

The heated surfaces allow for cleaning snow from the flat roofs.

The use of snow and water is a progressive decision which enables the turning of climatic disadvantages into advantages.

3. FUNCTIONAL ASPECT

Две основные функции – учебная и жилая – нашли контрастное выражение в противопоставлении объемов.

The main function – study and accommodation – find here a contrasting expression in the contraposition of their areas.

The rectangular block of the accommodation space, Hotel, Rooms, Residence hall for students and PhD students. The majority (more than 60%) of the rooms face the south.

With a slight rotation of the outer wall of each room we can achieve their orientation to the west, to the Tom River.

The cascade square platforms of the training block form interior space with variable heights.

In the platform there are class areas with the appropriate infrastructure including those with a recreational character.

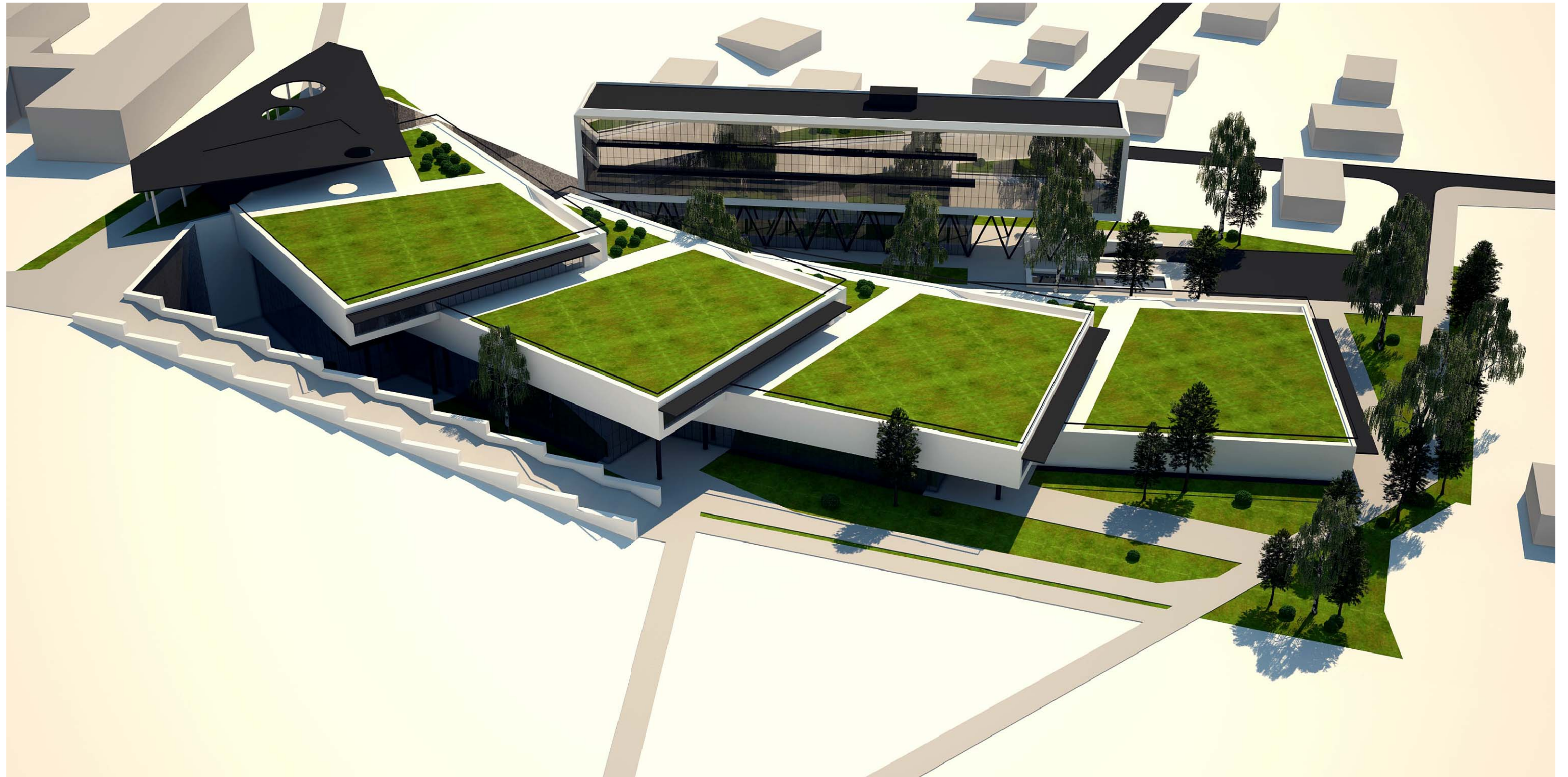
In the interior space in parts with a low height there are transformable multifunctional premises and in the parts with a great height (the eastern part) there are hall premises.

There is room for a swimming pool.

Here we can use horizontal transformation – overlap of the swimming pool for carrying out public activities in this area.



Three-dimensional solution



Three-dimensional solution